



Run-on and Run-off Control System Plan
Ash Disposal Facility
Hoot Lake Plant

Introduction

This plan presents the run-on and run-off control system plan for the closed CCR landfill at the Hoot Lake Plant in Fergus Falls, Minnesota. The landfill underwent final closure in the Summer of 2023. The landfill began the 30-year post closure care period on January 11, 2024. This document addresses the requirements of 40 CFR §257.81.

Run-on and Run-off Control System Plan § 257.81(c)

The landfill is located in a region that has a type II rainfall distribution. According to the National Oceanic and Atmospheric and Administration, a 24-hour, 25-year storm event yields 4.57 inches of rainfall for the geographic location of the landfill.

Run-on

The CCR landfill is constructed with perimeter berms along the north, west and south sides, and final cover along the east side. The perimeter berms and surrounding topography slope away from the unit preventing run-on into the waste boundary.

Run-off

The landfill is now closed with no exposed CCR. The final cover system utilizes stormwater diversion berms, downslope structures, turfmat, drain tile and downslope pipes to capture stormwater and convey it off the final cover to stormwater basins located beyond the waste boundary. Stormwater basins to the north of the landfill can store approximately 10,231 cubic feet of run-off liquid. Stormwater basins to the south of the landfill can store approximately 93,595 cubic feet of run-off liquid.

Amendment of Run-off and Run-off Control Plan § 257.81(c)(2) and (4)

If any event or change affects the plan, a modified Run-on Run-off Control Plan will be prepared and included in the facility's operating record and posted on the CCR website. At a minimum, the Run-on Run-off Control Plan will be reviewed every five years.

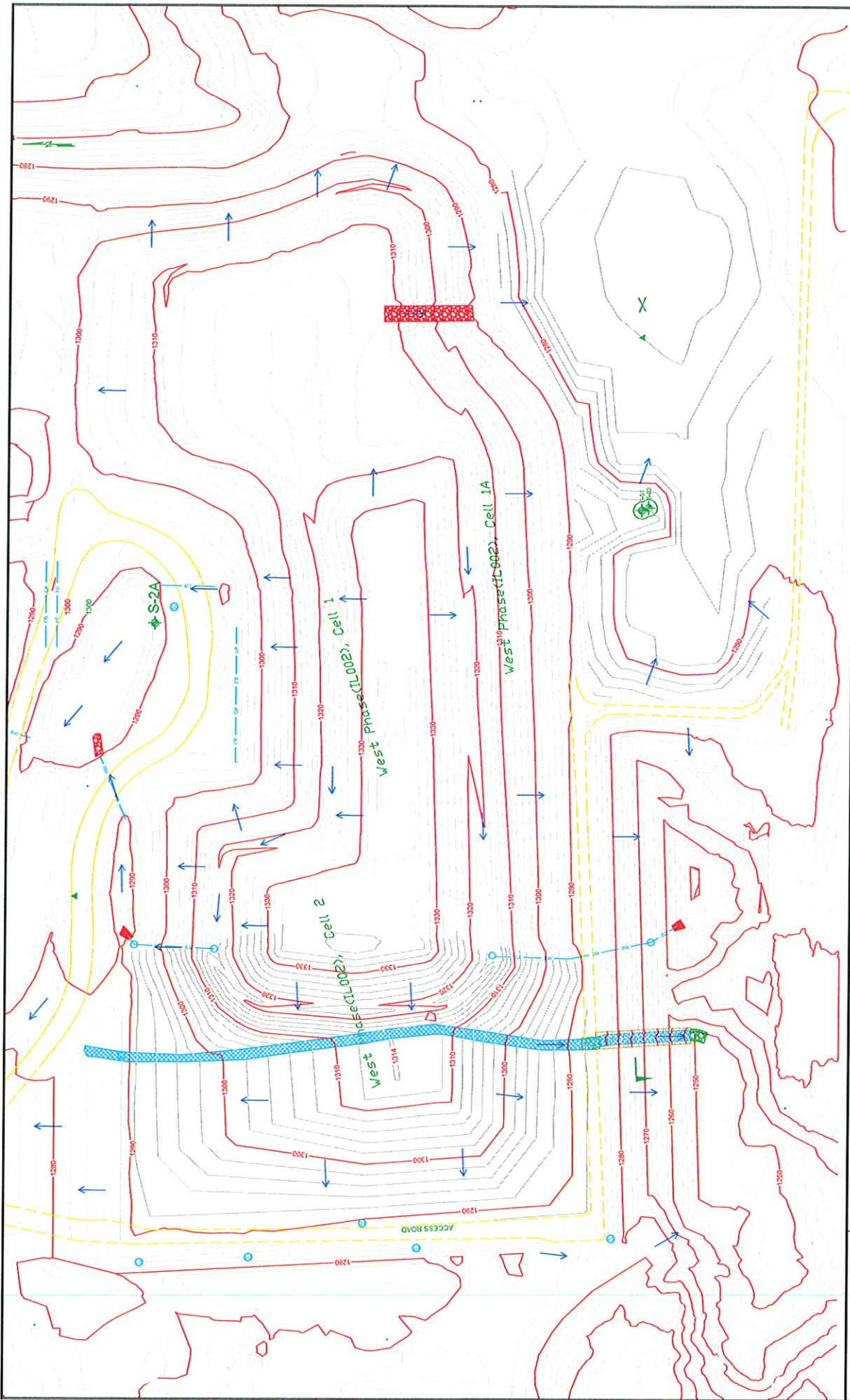
Certification § 257.81(c)(5)

I hereby certify under penalty of law that this report was prepared under my direction or supervision in accordance with a system designed to assure that qualified personnel properly gather and evaluate the information submitted. Based upon my inquiry of the person or persons who manage the system, or those persons directly responsible for gathering the information, the information submitted is, to the best of my knowledge and belief, true, accurate, and complete. I am aware there are significant penalties for submitting false information, including the possibility of fine and imprisonment.

A handwritten signature in blue ink that reads "Paul Vukonich".

Paul M. Vukonich, PE
License No. 50857

January 29, 2024
Date



SCALE IN FEET

NO.	DATE	BY	DESCRIPTION
1	10/11/11	J. J. [unreadable]	INITIAL DESIGN
2	10/11/11	J. J. [unreadable]	REVISED DESIGN
3	10/11/11	J. J. [unreadable]	FINAL DESIGN

OTTER TAIL POWER COMPANY
 1012 Water Plant Rd, Fergus Falls, MN 56537

HOOT LAKE ASH LANDFILL
 FERGUS FALLS, MN

FIGURE 1
RUN-ON RUN-OFF CONTROL PLAN